

ENABLING OPTIMAZTION OF **SHARED USE SPACES**

Allvision helps cities, municipalities, government agencies, and beyond to plan the reuse of the curb with incredibly fast, reliable, and accurate data available at your fingertips.



+1-412-348-8481



info@allvision.io

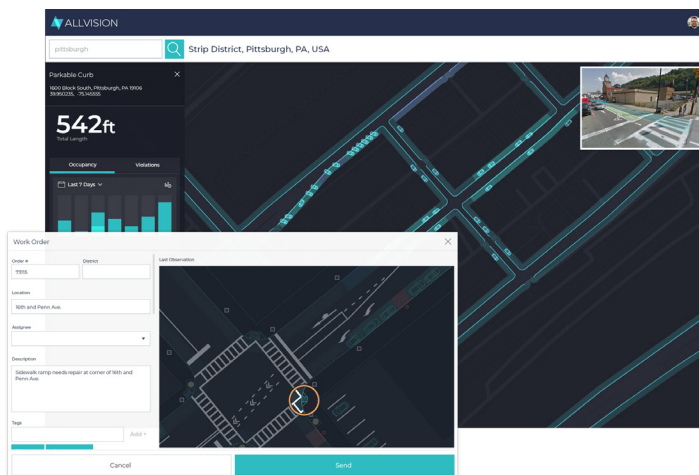


allvision.io

SOLUTION

Cities, municipalities, and organizations are charged with optimizing the street, parking, and curb spaces, along with providing safety for pedestrians and maintaining understandable signage and directions for its usage. Allvision insights can quickly scale on a pass-by-pass basis and assist in determining congestion and time based pricing rates, determining post-quarantine use of outdoor sidewalk seating, and optimizing accessibility for micro-mobility, including scooters, bikes, and ridesharing.

Allvision's data and the real-time changes that can be made as a result will directly impact the potential revenue coming into a city. We can determine how many parking infractions occur in specific areas in a given period of time and by whom (delivery truck, personal vehicle, motorcycle, etc.). We can also help determine what areas are ADA accessibility compliant and which fall short, helping to future-proof citiscapes. Allvision takes your city's information to the next generation of mobility.



CODING THE CURB

Allvision deploys a sensor stack similar to those utilized in autonomous vehicles to collect data. Alternately, our system can ingest data collected externally and in a variety of file types (GIS, etc.). We then utilize a proprietary and market-unique data processing model to digitize assets. The end result equals a fully functioning digital twin of city streets available on an intuitive, comprehensive browser application, accessible from anywhere.



90%
EFFICIENCY INCREASE

Unparalleled data accuracy collected in less than 10% of the time as traditional methods.



360°
DETECTION

Spherical detection provides insights and metrics not perceivable with traditional "boots-on-the-ground" solutions and allows for seamless remote inspection and management.

USE CASES

- Municipal asset inventories
 - Signage
 - Poles
 - Crosswalks
 - Trees
 - Traffic lights
- Curb occupancy
- Sidewalk congestion
- ADA and accessibility compliance

BENEFITS

- Improve parking ROI by measuring demand
- Optimize multi-usage curb options
- Improve safety and compliance for drivers and users
- Increase flexibility with faster decision making
- Regulate infrastructure

Contact Allvision for further details on city mapping and monitoring capabilities.



ALLVISION

info@allvision.io